



Overview of 3twenty Solutions' Container Camps



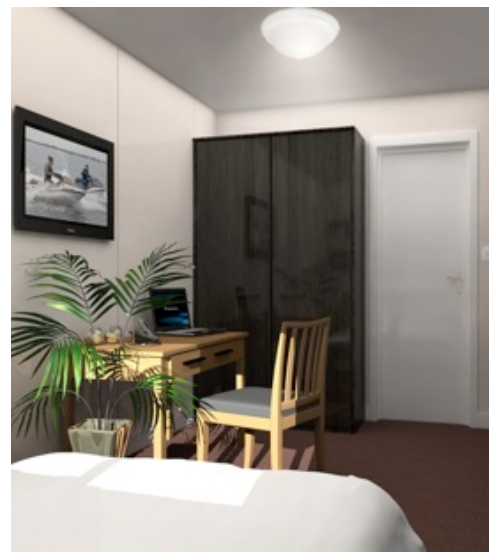
Overview

3twenty Solutions builds modular, durable, transportable and comfortable container camps. We are committed to satisfying our clients' needs and enjoy tackling design challenges to build perfectly suited staff accommodations. Every camp is a little bit different, always reflecting the needs of the end user.

As an innovative camp supplier, 3twenty looks beyond traditional construction methods. Instead of building traditional stick-framed trailers using typical construction products, like fiberglass insulation, 3twenty designs and builds camps using shipping containers and integrates new construction technology, such as spray foam insulation.

The benefits of a 3twenty container products rest on four main pillars: quality, durability, cost, and transportability. The below are specific **benefits of our products**:

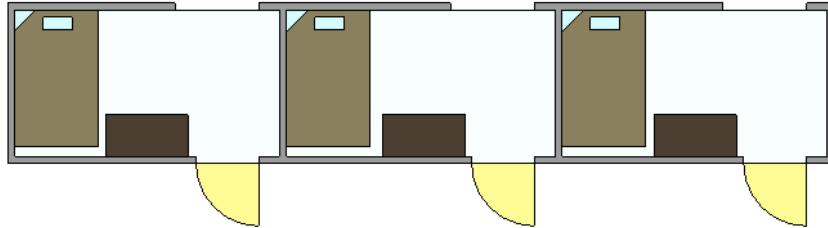
- Containers are incredibly durable and make an excellent building block
- Spray foam is used on all products, providing a continuous vapour barrier, which reduces risk of mold
- Spray foamed containers provide an incredibly efficient building envelop lowering operating costs
- Container modules can easily be added on, making them ideal for gradual expansion
- Container modules can eventually be decommissioned and relocated to serve other locations
- Legal width transportation reduces cost of transportation per unit
- Public relations benefit through mining industry building "green" with reused shipping container camp



Camp Designs

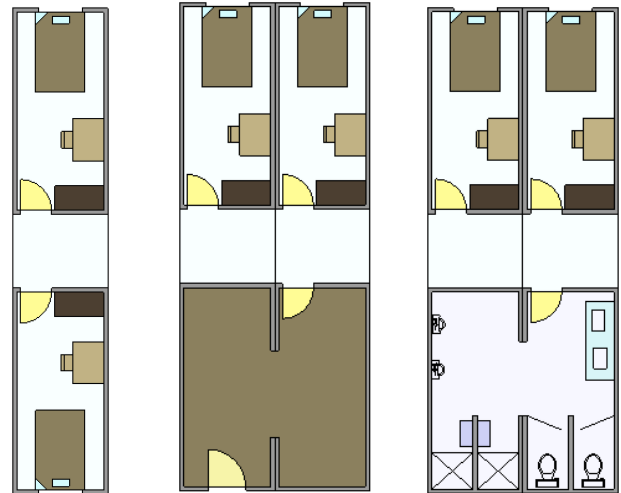
Stventy has a number of camp designs available. Designs range from accommodating one employee to accommodating 30 and over. Below are a few samples. The next page includes details on a typical 30 person camp with full kitchen, bathrooms, mud room, and laundry facilities.

3 Person Sleeper Module: These units can be connected to make bigger accommodation units. These are a great option if the units will be relocated frequently.

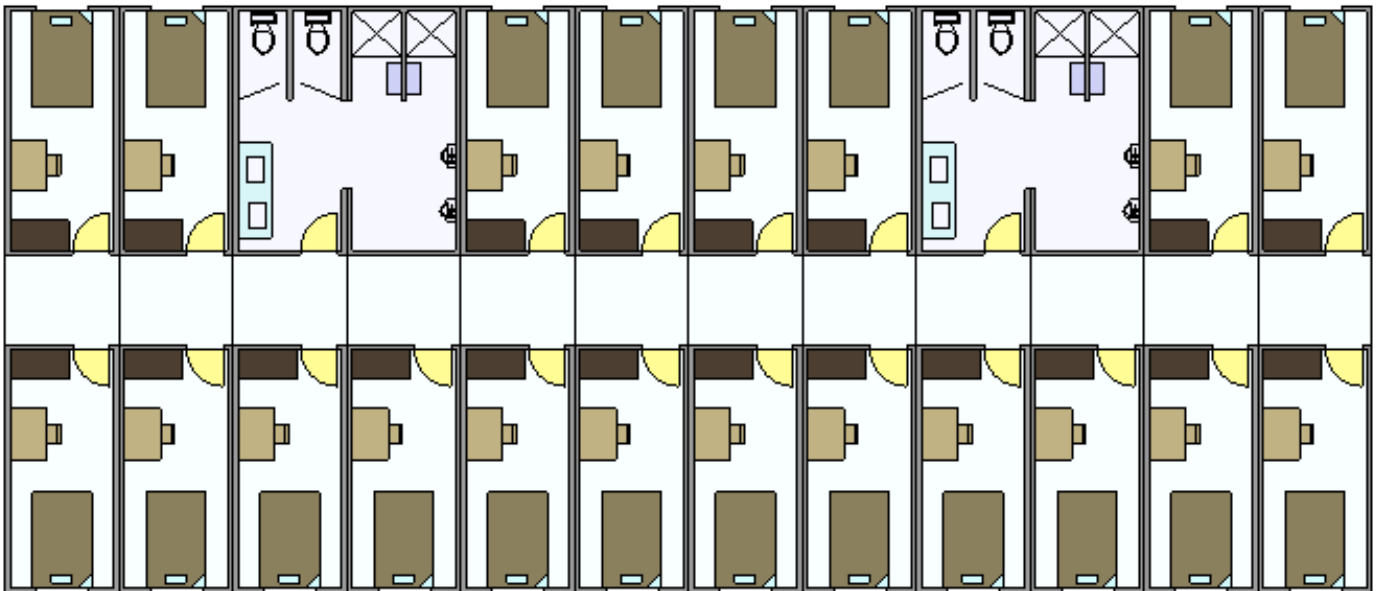


Modules in Larger Camps

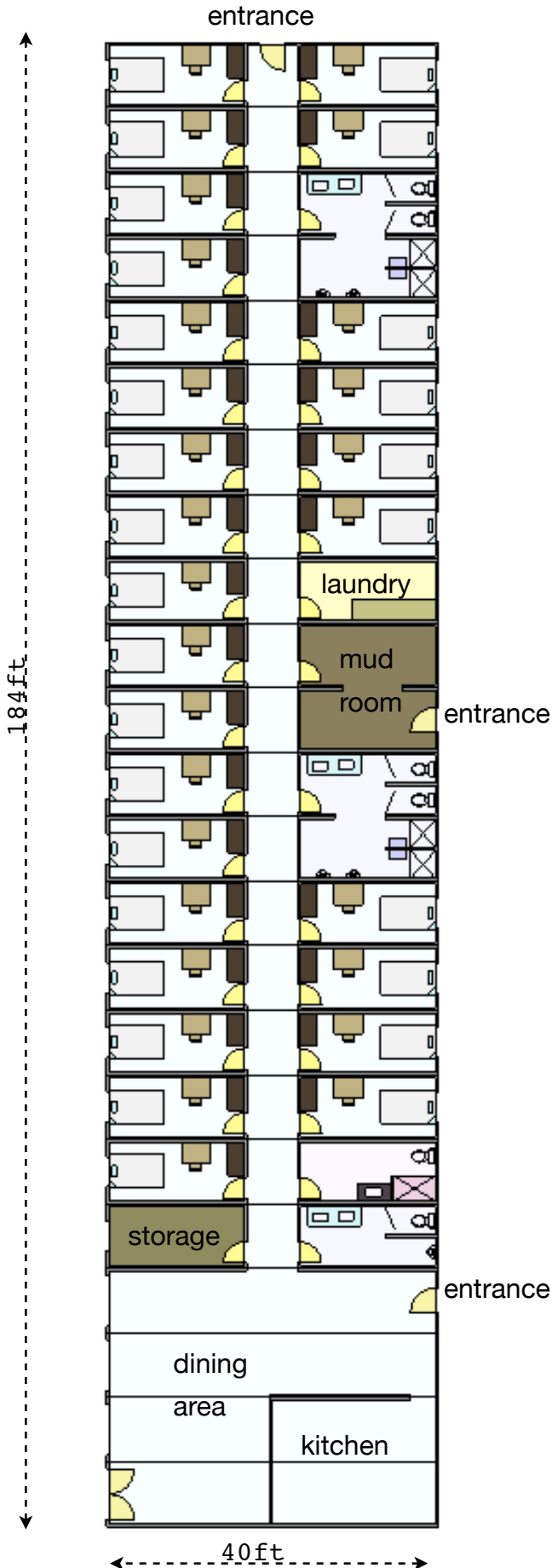
Three common modules, to the right, can be combined to create large camp setups, like the 20 person setup below, or the 30 person setup on the next page. They connect together to form a hallway down the centre.



20 Person Camp Setup



30 Person Camp Design



Overview

A 30 person camp would be designed using 23 40ft high cube containers. These 23 containers are the building blocks for:

- 30 bedrooms: 112 square feet each
- 2 full men's bathrooms: 224 square feet each
- 1 full women's bathroom: 112 square feet
- 1 men's washroom: 112 square feet
- Main entrance and mudroom: 224 square feet
- Laundry room: 112 square feet
- Storage room: 112 square feet
- Dining Area / Common Area: 860 square feet
- Kitchen: 280 square feet

Camp Floor Plan

Employees enter via one of three main entry ways. The mud room is the preferred entrance. All employees have quick access to washrooms. Due to the small air gap between each container, workers can sleep soundly with minimal noise vibration.

Hallways are 6ft wide and provide ample room for everyday passage and quick evacuation in case of emergency.

Because the camp is designed in "modules," the camp can easily be added on to or modified. The dining area was designed larger than required to accommodate future expansion.

Bedroom Renderings



Large Bathroom Renderings



Kitchen & Dining Area Renderings



Mud Room Rendering



Exterior Rendering



Standard Specs

The below are very general, standard product specs. These can be upgraded and modified to ensure the client gets exactly what they need.

Bedrooms:

- SolidCore Natural Birch Door, 20 minute fire rating
- ½" Fireguard Gypsum Vipco pre-finished panel
- 24"x24" carpet tile
- 3" Vipcore baseboard
- 4'x 3' window
- 1250W/240V baseboard heater
- Electronic thermostat
- Electrical outlets x 3
- Flush mount ceiling light
- 2" spray foam in walls, 3" in ceiling

Bathrooms:

- FRP laminated to OSB wall panels
- Luxury Vinyl Tile (LVT) floor (Mannington Nature's Path Select)
- 4" rubber baseboard
- DHC Tankless Electric Water Heater 10KW
- Wall mounted vanity with drop in sinks
- Gerber single handle lavatory faucet
- Low consumption toilet
- Lafayette wall hung low consumption urinal
- 34" x 34" x 72" shower stall with molded toiletry shelf
- Wall mounted hand dryer
- Electrical outlets x 2
- 1250W/240V baseboard heater
- Fluorescent wraparound light x 4
- Mirror above vanity
- Light fixture above mirror
- 2" spray foam in walls, 3" in ceiling
- Timed bathroom fans

Kitchen / Dining Area:

- Luxury Vinyl Tile (LVT) floor (Mannington Nature's Path Select)
- 4" rubber baseboard
- ½" Fireguard Gypsum Vipco pre-finished panel
- Fluorescent wraparound light x 16
- 36" steel exterior door, panic bar hardware
- Double swinging doors between kitchen/dining area
- Buffet / serving space
- Large picture window looking on to lake x 3
- Glass exterior doors to deck
- Common area electrical outlets x 12
- Kitchen wired for standard industrial kitchen setup
- 1250W/240V baseboard heater x 10
- 2" spray foam in walls, 3" in ceiling

Mudroom / Main Entrance:

- Luxury Vinyl Tile (LVT) floor (Mannington Nature's Path Select)
- 4" rubber baseboard
- 30 metal lockers
- Bench seating
- 1250W/240V baseboard heater x 3
- Fluorescent wraparound light x 5
- 2" spray foam in walls, 3" in ceiling

Exterior:

- Ends with barn doors are usually finished with cedar
- Exposed sides of containers will be painted custom colour (usually company colours)
- Exterior lights above entrances

Transportation & Setup

Transportation is coordinated between the client, 3twenty, and the client-chosen carrier. Container modules will be picked up and loaded on a legal flat bed semi-truck and transported to site. Each module would be crane-lifted off the truck and into place. If no crane is available, units can also be rolled off.

In order to facilitate a quick setup and stable foundation, preparation work should be completed in advance. A built-up crushed rock foundation is suitable for container construction.

Camp setup requires limited welding as the camp is essentially bolted together. Plumbing lines and electrical hookup should be prepared on site prior to delivery of camp. The client is responsible for having a qualified electrician to handle on-site electrical integration

Cost Savings

- **Setup savings:** Traditional camps for 30+ people take a crew of 5-6 people over 2 weeks to setup. Your container camp would be setup in half the time. In addition to accommodating the cost of install crew, traditional camps are setup at about \$8,000 per trailer. 3twenty includes its setup cost in unit prices.
- **Operational savings:** Because 3twenty's container camps are spray foamed, they create an incredibly efficient building envelop. Operating cost of comparable trailers are higher than 3twenty's container products.
- **Customization savings:** 3twenty is pleased to design and build a camp from the ground up with customers. In order for camp design preferences to be achieved via another builder, significant compromise or additional cost would be incurred.
- **Investment Life:** 3twenty's container products are virtually indestructible. The containers themselves are built to last years of shipping in harsh environments. As such, the life span of 3twenty's container products is far longer than traditional trailers.

About 3twenty Solutions

3twenty Solutions Inc, based in Saskatoon, SK, has a reputation as "Canada's Container Experts." 3twenty is a leader in reusing shipping containers by turning them in to offices, accommodations, core shacks, and other purpose-built spaces. We are proud to provide a durable, transportable, customizable and greener alternative to the modular trailer industry.